

# DIVINE DEMONS: WRATHFUL DEITIES OF BUDDHIST ART

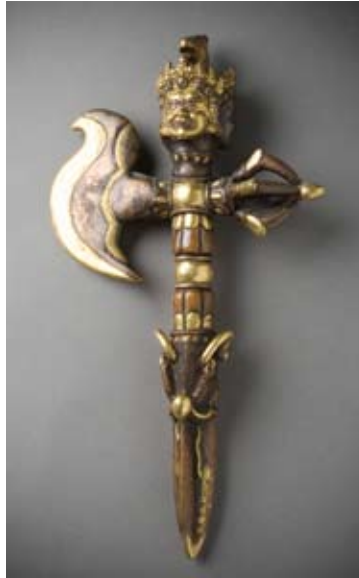
On View at the Norton Simon Museum

August 14, 2009–March 8, 2010

We are pleased to provide the following images for publicity relating to the exhibition.  
To receive digital versions of the images, please contact Leslie Denk at (626) 844-6941 or [ldenk@nortonsimon.org](mailto:ldenk@nortonsimon.org).



*Mahakala*, 15th century  
Tibet  
Bronze with pigment  
6 x 5-1/4 x 2 in. (15.2 x 13.3 x 5.1 cm)  
Norton Simon Art Foundation  
M.1975.14.10.S



*Ritual Axe*, 20th century  
Tibet  
Gold metal  
15-1/2 x 8-1/2 in. (39.37 x 21.59 cm.)  
Norton Simon Museum, Estate of Armand  
J. Labbé, in memory of his parents,  
Gertrude and Armand Labbé  
P.2006.02.08



*Hayagriva*, 17th century  
Tibet or Mongolia (?)  
Gilt bronze with pigment  
12 x 8-7/8 x 5-1/2 in. (30.5 x 22.5 x 14.0 cm)  
Jennifer Jones Simon Art Trust  
N.1974.07.S



*Mask*, 20th century  
Tibet  
Metal  
13-1/2 x 16 in. (34.29 x 40.64 cm.)  
Norton Simon Museum, Estate of Armand J. Labbé, in  
memory of his parents, Gertrude and Armand Labbé  
P.2006.02.09



*Mahakala*, 19th century  
Tibet  
Opaque watercolor on cotton  
comp: 29-3/4 x 19-1/4 in.  
(75.6 x 48.9 cm)  
Norton Simon Museum, Gift of Beata and  
Michael McCormick  
P.2001.07



*Ritual Dagger*, 17th century  
Tibet or Nepal, 1600-1699  
Painted wood  
13 in. (33 cm)  
Norton Simon Art Foundation  
M.1977.30.01.S