

# Norton Simon Museum

## Family Art Project: Nature Prints

Inspired by leaves, stems and petals, Ellsworth Kelly examined the natural environment around him to create drawings and prints. Explore his work and create prints inspired by forms found in nature.



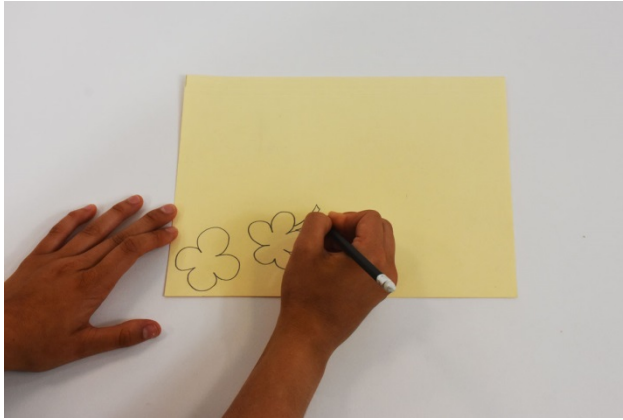
Ellsworth Kelly (American, 1923–2015), *Cyclamen III*; *Tangerine (Mandarine)*; *Camellia II*, 1964–1965, Transfer lithographs on Rives BFK paper, Norton Simon Museum, Gift of the Artist, 1969, © Ellsworth Kelly Foundation and Maeght Éditeur

### Materials:



- Paper
- Thick paper (ie. Cardstock)
- Pencil
- Scissors
- Card board
- Glue stick
- Stamp pad

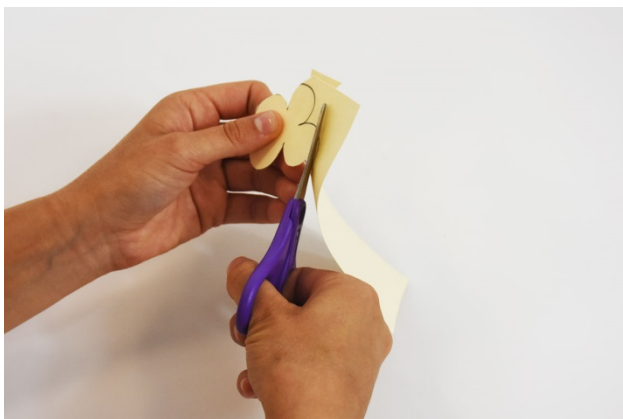
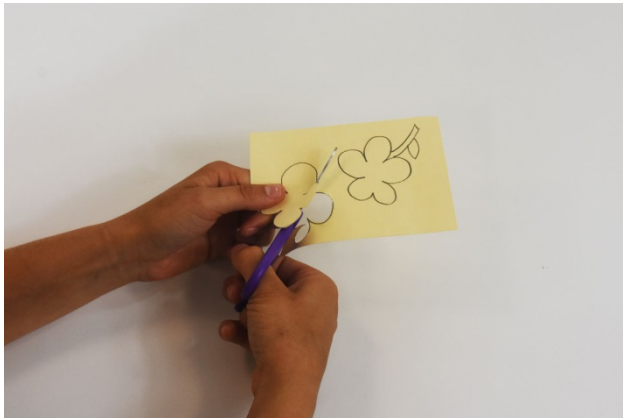
## Steps:

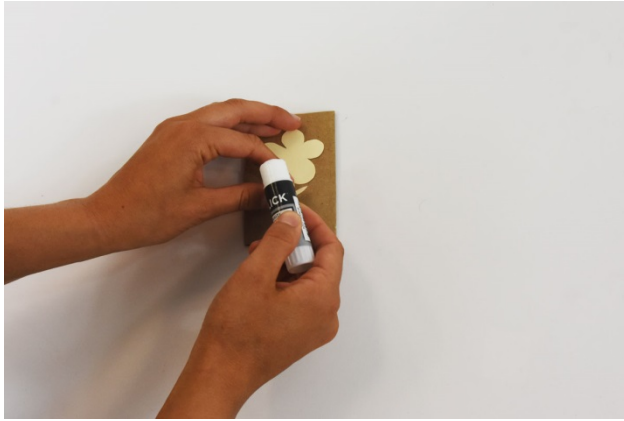


**Step 1:** Draw a design on thick paper, such as cardstock.

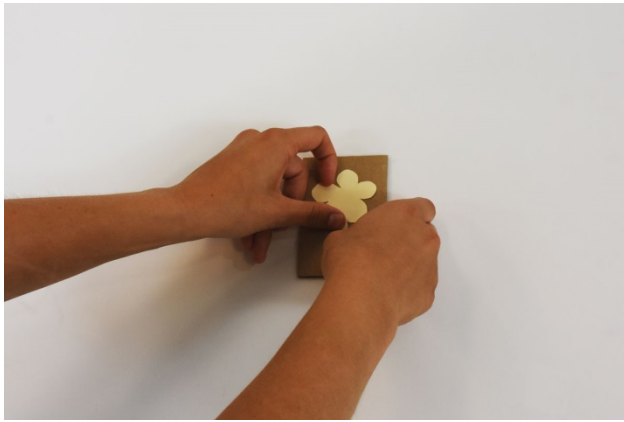


**Step 2:** Cut out your design, following the lines you drew.

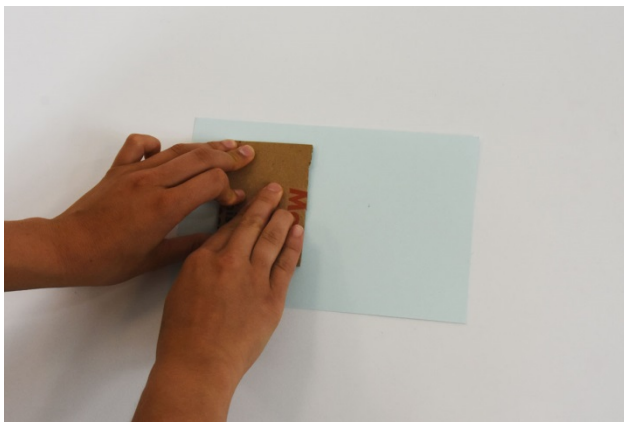


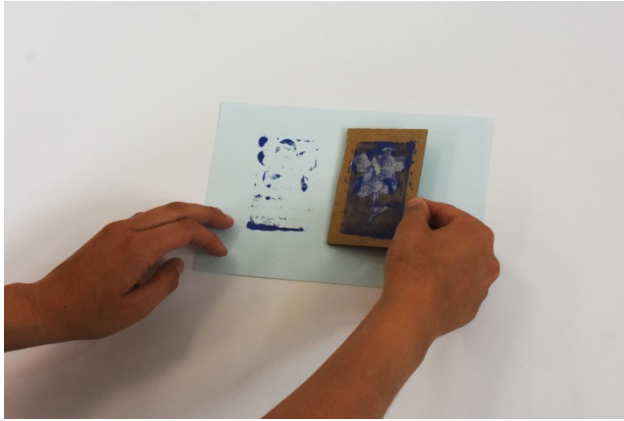


**Step 3:** Glue your cut-out onto a piece of cardboard that is roughly the same size.



**Step 4:** Use a stamp pad to apply ink to your design and then stamp it onto a piece of paper.





**Step 4:** Create a composition experimenting with different shapes and colors. Admire your new print inside your home or outside in nature.

