

# Maven of Modernism: Galka Scheyer in California Checklist

April 7 – September 25, 2017 | Norton Simon Museum



**Lyonel Feininger (American, 1871–1956)**

*Untitled, c. 1945*

Watercolor, silver pigment and India ink on laid paper

8-5/8 x 12-1/2 in.

Norton Simon Museum, The Blue Four Galka Scheyer Collection



**Lyonel Feininger (American, 1871–1956)**

*Harbor Entrance with Sailboats, 1920*

Woodcut on Japanese laid paper

comp: 3-1/4 x 6-3/8 in.; sheet: 6-3/4 x 9-3/4 in.

Norton Simon Museum, The Blue Four Galka Scheyer Collection



**Lyonel Feininger (American, 1871–1956)**

*Yellow Village Church 2, 1921*

Woodcut on Japanese laid paper

comp: 6-1/2 x 8 in.; sheet: 9-3/4 x 13-3/8 in.

Norton Simon Museum, The Blue Four Galka Scheyer Collection



**Lyonel Feininger (American, 1871–1956)**

*Ascending Balloon, 1920*

Watercolor and India ink on laid paper

comp: 7-7/8 x 8-3/4 in.; sheet: 9-1/4 x 11-7/8 in.

Norton Simon Museum, The Blue Four Galka Scheyer Collection



**Lyonel Feininger (American, 1871–1956)**

*River Bank, 1932*

Watercolor and India ink on laid paper

comp: 9-1/2 x 14-3/4 in.; sheet: 12 x 18-1/4 in.

Norton Simon Museum, The Blue Four Galka Scheyer Collection



**Lyonel Feininger (American, 1871–1956)**

*Peaceful Voyage III*, 1933

Watercolor and India ink on laid paper

comp: 8-5/8 x 9 in.; sheet: 10-3/4 x 11-1/4 in.

Norton Simon Museum, The Blue Four Galka Scheyer Collection



**Lyonel Feininger (American, 1871–1956)**

*Blue Shore*, c. 1938

Watercolor and India ink on laid paper

comp: 8 x 11-3/4 in.; sheet: 8 x 11-3/4 in.

Norton Simon Museum, The Blue Four Galka Scheyer Collection



**Lyonel Feininger (American, 1871–1956)**

*Blue Skyscrapers*, 1937

Watercolor and India ink on laid paper

comp: 10 x 7-1/8 in.; sheet: 12-1/4 x 9-5/8 in.

Norton Simon Museum, The Blue Four Galka Scheyer Collection



**Lyonel Feininger (American, 1871–1956)**

*Sailing Ship*, 1933

Watercolor and India ink on laid paper

comp: 5-7/8 x 6 in.; sheet: 7-1/2 x 7-3/4 in.

Norton Simon Museum, The Blue Four Galka Scheyer Collection



**Alexei Jawlensky (Russian, 1864–1941)**

*Fiery Head*, c. 1912

Oil on textured wove paper, mounted on canvas

comp: 5-7/8 x 6 in.; sheet: 7-1/2 x 7-3/4 in.

Norton Simon Museum, The Blue Four Galka Scheyer Collection



**Alexei Jawlensky (Russian, 1864–1941)**

*Large Variation: Wide Path*, 1916

Oil and pencil on textured wove paper, mounted on cardboard

21-5/8 x 14-1/8 in.

Norton Simon Museum, The Blue Four Galka Scheyer Collection



**Alexei Jawlensky (Russian, 1864–1941)**

*Reclining Nude*, c. 1912

Pencil with trace of colored pencil on wove paper

12-1/4 x 19-3/8 in.

Norton Simon Museum, The Blue Four Galka Scheyer Collection



**Alexei Jawlensky (Russian, 1864–1941)**

*Abstract Head: Winter Ringing*, 1927

Oil and pencil on textured cardboard

16-3/4 x 12-3/4 in.

Norton Simon Museum, The Blue Four Galka Scheyer Collection



**Alexei Jawlensky (Russian, 1864–1941)**

*Abstract Head: Contained*, 1932

Oil on cardboard

7 x 5-1/2 in.

Norton Simon Museum, The Blue Four Galka Scheyer Collection



**Alexei Jawlensky (Russian, 1864–1941)**

*Variation: Spring Evening*, 1916

Oil and pencil on textured wove paper mounted on cardboard

13-7/8 x 10-3/8 in.

Norton Simon Museum, The Blue Four Galka Scheyer Collection



**Alexei Jawlensky (Russian, 1864-1941)**

*Variation: Tragic*, c. 1918

Oil and pencil on textured wove paper mounted on thin cardboard

14-3/8 x 10-1/2 in.

Norton Simon Museum, The Blue Four Galka Scheyer Collection



**Alexei Jawlensky (Russian, 1864-1941)**

*Variation: Summer Blessing*, 1916

Oil on textured wove paper mounted on canvas

14-1/4 x 10-3/4 in.

Norton Simon Museum, The Blue Four Galka Scheyer Collection



**Alexei Jawlensky (Russian, 1864-1941)**

*Variation: Ours*, 1918

Oil and pencil on textured wove paper mounted on cardboard

14-3/8 x 10-3/4 in.

Norton Simon Museum, The Blue Four Galka Scheyer Collection



**Alexei Jawlensky (Russian, 1864-1941)**

*Variation: Evening*, c. 1916

Oil and pencil on tan textured wove paper mounted on cardboard

13-7/8 x 10-3/8 in.

Norton Simon Museum, The Blue Four Galka Scheyer Collection



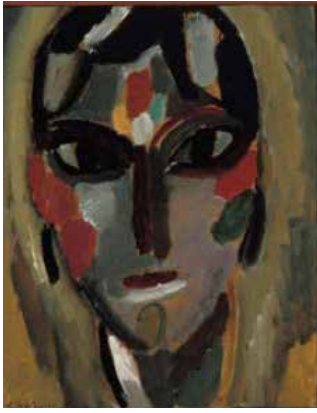
**Alexei Jawlensky (Russian, 1864-1941)**

*Hunchback*, 1917

Oil and pencil on textured cardboard

9-3/4 x 8-1/4 in.

Norton Simon Museum, The Blue Four Galka Scheyer Collection



**Alexei Jawlensky (Russian, 1864-1941)**

*Mystical Head: The Poison Blossom*, 1918

Oil and pencil on cardboard mounted on wood

19-3/8 x 15-5/8 in.

Norton Simon Museum, The Blue Four Galka Scheyer Collection



**Alexei Jawlensky (Russian, 1864-1941)**

*Galka in the Bag*, 1923

Conté crayon on pink wove paper

3 5/8 x 6 3/8 in.

Norton Simon Museum, The Blue Four Galka Scheyer Collection



**Alexei Jawlensky (Russian, 1864-1941)**

*Sad Galka, Singing Galka, Resting Galka*, 1921-22

Pencil on wove paper

7-5/8 x 15-3/8 in.

Norton Simon Museum, The Blue Four Galka Scheyer Collection



**Alexei Jawlensky (Russian, 1864-1941)**

*Mystical Head: Galka*, 1917

Oil and pencil on tan textured cardboard

15-1/2 x 12 in.

Norton Simon Museum, The Blue Four Galka Scheyer Collection



**Alexei Jawlensky (Russian, 1864-1941)**

*Galka in the Bag*, 1924

Ink on lined wove paper

comp: 1 x 3/4 in.; sheet: 3-1/2 x 8-1/2 in.

Norton Simon Museum, The Blue Four Galka Scheyer Collection Archives



**Vasily Kandinsky (Russian, 1866-1944)**

*Blue*, 1922

Color lithograph on wove paper

comp: 8-1/4 x 5-7/8 in.; sheet: 12-3/4 x 11 in.

Norton Simon Museum, The Blue Four Galka Scheyer Collection



**Vasily Kandinsky (Russian, 1866-1944)**

*Small Worlds II*, 1922

Color lithograph on wove paper

comp: 10-1/8 x 8-7/8 in.; sheet: 12-7/8 x 11 in.

Norton Simon Museum, The Blue Four Galka Scheyer Collection



**Vasily Kandinsky (Russian, 1866-1944)**

*Untitled*, 1923

Watercolor and India ink on wove paper from sketch pad

18-1/2 x 16-3/4 in.

Norton Simon Museum, The Blue Four Galka Scheyer Collection



**Vasily Kandinsky (Russian, 1866-1944)**

*Lithograph No. III*, 1925

Lithograph on wove paper

comp: 10-3/8 x 7-1/2 in.; sheet: 18-7/8 x 13-5/8 in.

Norton Simon Museum, The Blue Four Galka Scheyer Collection



**Vasily Kandinsky (Russian, 1866-1944)**

*Vignette for "Spring", 1911-12*

Woodcut on Japanese laid paper

comp: 4-3/4 x 3-1/2 in.; sheet: 6-1/2 x 4-5/8 in.

Norton Simon Museum, The Blue Four Galka Scheyer Collection



**Vasily Kandinsky (Russian, 1866-1944)**

*From Cool Depths, 1928*

Watercolor on wove paper, mounted on cardboard

sheet: 19 x 12-5/8 in.; mount: 23-7/8 x 17-1/2 in.

Norton Simon Museum, The Blue Four Galka Scheyer Collection



**Vasily Kandinsky (Russian, 1866-1944)**

*Heavy Circles, 1927*

Oil on canvas

22-1/2 x 20-1/2 in.

Norton Simon Museum, The Blue Four Galka Scheyer Collection



**Vasily Kandinsky (Russian, 1866-1944)**

*Sketch for "Deluge I", 1912*

Oil and charcoal on cardboard mounted on wood

13-7/8 x 19-1/8 in.

Norton Simon Museum, Museum Purchase with funds acquired from the Galka E. Scheyer Estate, for the Blue Four Galka Scheyer Collection



**Vasily Kandinsky (Russian, 1866-1944)**

*Unequal, 1932*

Oil and gouache on canvas

23-5/8 x 27-5/8 in.

Norton Simon Museum, Museum Purchase for The Blue Four Galka Scheyer Collection with funds donated by Mr. and Mrs. Alexander P. Hixon



**Paul Klee (Swiss, 1879–1940)**

*Plant Seeds*, 1927

Watercolor and India ink on laid paper mounted on cardboard

sheet: 12 x 18 3/8 in.; mount: 18-7/8 x 24-5/8 in.

Norton Simon Museum, The Blue Four Galka Scheyer Collection



**Paul Klee (Swiss, 1879–1940)**

*The Tree of Houses*, 1918

Watercolor, gouache and India ink on chalk-primed gauze on wove papers, mounted on cardboard

comp: 8-5/8 x 7-1/4 in.; mount: 9-5/8 x 7-7/8 in.

Norton Simon Museum, The Blue Four Galka Scheyer Collection



**Paul Klee (Swiss, 1879–1940)**

*With the Mountain Range*, 1919

Watercolor and gouache on laid paper

9-5/8 x 12-3/4 in.

Norton Simon Museum, The Blue Four Galka Scheyer Collection



**Paul Klee (Swiss, 1879–1940)**

*Memory of a Bird*, 1932

Watercolor and pencil on laid paper

12-3/8 x 18-7/8 in.

Norton Simon Museum, The Blue Four Galka Scheyer Collection



**Paul Klee (Swiss, 1879–1940)**

*A Walk Hand in Hand*, 1921

India ink on wove paper mounted on paper

sheet: 8-3/4 x 6-3/4 in.; mount: 12-7/8 x 9-7/8 in.

Norton Simon Museum, The Blue Four Galka Scheyer Collection





**Paul Klee (Swiss, 1879–1940)**

*Aquarium Green-Red*, 1921

Watercolor and ink on laid papers, mounted on Japanese laid paper  
mounted on thin cardboard

comp: 8-7/8 x 4-3/4 in.; mount: 9-1/2 x 6 in.

Norton Simon Museum, The Blue Four Galka Scheyer Collection



**Paul Klee (Swiss, 1879–1940)**

*Black Bell in the Forest*, 1921

Watercolor, gouache and India ink on wove papers, mounted on cardboard  
comp: 5-7/8 x 7-5/8 in.; mount: 6-3/8 x 8 in.

Norton Simon Museum, The Blue Four Galka Scheyer Collection



**Paul Klee (Swiss, 1879–1940)**

*Idol for House Cats*, 1924

Watercolor, oil transfer drawing and lace collage on chalk-primed muslin,  
mounted on thin cardboard

comp: 13-7/8 x 18-1/4 in.; mount: 15-3/8 x 19-3/4 in.

Norton Simon Museum, The Blue Four Galka Scheyer Collection



**Paul Klee (Swiss, 1879–1940)**

*Plants in the Courtyard*, 1932

Oil and gouache on heavy wove paper mounted (not by the artist) on board  
sheet: 14-3/4 x 21-1/8 in.

Norton Simon Museum, The Blue Four Galka Scheyer Collection



**Paul Klee (Swiss, 1879–1940)**

*The Gate to Hades*, 1921

Watercolor and oil transfer drawing on laid paper, mounted on thin  
cardboard

sheet: 10 7/8 x 15 3/8 in.; mount: 12-1/4 x 16-7/8 in.

Norton Simon Museum, The Blue Four Galka Scheyer Collection



**Paul Klee (Swiss, 1879–1940)**

*Maid of Saxony*, 1922

Oil on oil-primed muslin with metallic paper strips mounted on thin cardboard  
comp: 13-5/8 x 8-1/8 in.; mount: 15-1/8 x 9-1/4 in.

Norton Simon Museum, The Blue Four Galka Scheyer Collection



**Paul Klee (Swiss, 1879–1940)**

*Refuge*, 1930

Oil, tempera and watercolor on plaster grounded gauze mounted on  
cardboard

21-1/2 x 13-3/4 in.

Norton Simon Museum, The Blue Four Galka Scheyer Collection



**Paul Klee (Swiss, 1879–1940)**

*Possibilities at Sea*, 1932

Encaustic and sand on canvas

38-1/4 x 37-5/8 in.

Norton Simon Museum, The Blue Four Galka Scheyer Collection



**Paul Klee (Swiss, 1879–1940)**

*Vulgar Comedy*, 1922

Lithograph on wove paper

comp: 9 x 11-5/8 in.; sheet: 12-3/4 x 16-3/4 in.

Norton Simon Museum, The Blue Four Galka Scheyer Collection



**Alexander Archipenko (Russian/American, 1887–1964)**

*Figure*, 1917

Gouache, watercolor and pencil on wove paper

14 x 11 in.

Norton Simon Museum, The Blue Four Galka Scheyer Collection



**Alexander Archipenko (Russian/American, 1887–1964)**

*Suzanne*, 1907

Limestone

15-3/8 x 10 x 8-5/8 in.

Norton Simon Museum, The Blue Four Galka Scheyer Collection



**Alexander Archipenko (Russian/American, 1887–1964)**

*Standing Figure*, 1921–22

Colored pencil and pencil on wove paper

19-1/8 x 12-7/8 in.

Norton Simon Museum, The Blue Four Galka Scheyer Collection



**Angel Bracho (Mexican, 1911–2005)**

*Girl*, c. 1931

Oil on canvas

62-7/8 x 39-1/8 in.

Norton Simon Museum, The Blue Four Galka Scheyer Collection



**Angel Bracho (Mexican, 1911–2005)**

*Woman in Bed with a Cat*, 1931

Lithograph on laid paper

13-3/4 x 18-5/8 in.

Norton Simon Museum, The Blue Four Galka Scheyer Collection



**Imogen Cunningham (American, 1883–1976)**

*Calla (Calla Lilly)*, c. 1920 (printed 1971)

Gelatin silver print

10-5/8 x 8-3/4 in.

Norton Simon Museum, Gift of the Artist to the Blue Four Galka Scheyer Collection



**Imogen Cunningham (American, 1883–1976)**

*Black Lily*, c. 1920 (printed 1971)

Gelatin silver print

7-7/8 x 9-1/2 in.

Norton Simon Museum, Gift of the Artist to the Blue Four Galka Scheyer Collection



**Imogen Cunningham (American, 1883–1976)**

*Glacial Lily (False Hellebore)*, 1927 (printed 1971)

Gelatin silver print

9-3/8 x 8-1/2 in.

Norton Simon Museum, Gift of the Artist to the Blue Four Galka Scheyer Collection



**Imogen Cunningham (American, 1883–1976)**

*Agave*, c. 1920 (printed 1971)

Gelatin silver print

9-7/16 x 7-7/16 in.

Norton Simon Museum, Gift of the Artist to the Blue Four Galka Scheyer Collection



**Boris Deutsch (Lithuanian/American, 1892–1978)**

*Untitled*, c. 1920–1930

India ink and black crayon on wove paper

9 5/8 x 7 5/8 in.

Norton Simon Museum, The Blue Four Galka Scheyer Collection



**Maynard Dixon (American, 1875–1946)**

*Portrait of Galka Scheyer*, 1925

India ink on wove paper

comp: 3-3/4 x 3-1/4 in.; sheet: 4 x 3-3/8 in.

Norton Simon Museum, The Blue Four Galka Scheyer Collection



**T. Lux Feininger (American, b. 1910)**

*Head*, 1923

Gouache and pencil on wood

4 x 1-7/8 x 1-1/2 in.

Norton Simon Museum, The Blue Four Galka Scheyer Collection



**Oksar Fischinger (German, 1900-1967)**

*Bird in Flight*, 1946

Oil on canvas

18 x 24 in.

Norton Simon Museum, Gift of Mr. and Mrs. Paul Kantor



**Edward Hagedorn (American, 1902-1982)**

*Nude*, c. 1926-27

Ink on brown wove paper mounted on wove paper

comp: 10-7/8 x 7-3/4 in.; sheet: 19-1/8 x 12-1/2 in.

Norton Simon Museum, The Blue Four Galka Scheyer Collection



**Edward Hagedorn (American, 1902-1982)**

*Galka Scheyer Viewing Modern Portraits of Galka Scheyer*, c. 1926-28

Graphite on wove paper

comp: 23-1/8 x 18 in.; sheet: 25-1/8 x 20-1/8 in.

Norton Simon Museum, Anonymous Gift, Courtesy of Denenberg Fine Arts



**Edward Hagedorn (American, 1902-1982)**

*River Styx, Flying Geese*, c. 1926-28

Watercolor and ink on wove paper

13-1/4 x 11-1/8 in.

Norton Simon Museum, Anonymous Gift, Courtesy of Denenberg Fine Arts



**Andrei N. Jawlensky (Russian, 1902-1984)**

*Venice, c. 1918-20*

Oil and pencil on tan board

7-1/8 x 5-1/2 in.

Norton Simon Museum, The Blue Four Galka Scheyer Collection



**Ernst Ludwig Kirchner (German, 1880-1938)**

*Seated Female Nudes, 1913-1914*

Watercolor and pencil on wove paper

22 x 17-1/2 in.

Norton Simon Museum, The Blue Four Galka Scheyer Collection



**Felix Klee (Swiss, 1907-1990)**

*Untitled, c. 1919*

Watercolor and gouache on wove paper mounted on cardboard

sheet: 6-5/8 x 10-1/4 in.; mount: 9-1/2 x 12-5/8 in.

Norton Simon Museum, The Blue Four Galka Scheyer Collection



**Peter Krasnow (American, 1886-1979)**

*Recalling Happy Memories, c. 1927*

Watercolor, silver pigment and pencil on wove paper

5 x 6-3/8 in.

Norton Simon Museum, The Blue Four Galka Scheyer Collection



**Peter Krasnow (American, 1886-1979)**

*Untitled, c. 1928*

Woodcut on silver foil

9-1/2 x 4-1/2 in.

Norton Simon Museum, Gift of June Wayne



**Peter Krasnow (American, 1886–1979)**

*Study for “Portrait of Edward Weston”, 1925*

Pencil on wove paper

9-1/2 x 4-1/2 in.

Norton Simon Museum, Gift of Mrs. Oskar Fischinger to The Blue Four Galka Scheyer Collection



**Peter Krasnow (American, 1886–1979)**

*Untitled, c. 1928*

Woodcut on silver metallic foil

9-5/8 x 4-1/2 in.

Norton Simon Museum, Gift of Mrs. Oskar Fischinger to The Blue Four Galka Scheyer Collection



**El Lissitzky (Russian, 1890–1941)**

*Proun, c. 1922*

Gouache, pencil and tan paper collage element on wove paper

19-3/8 x 13-1/4 in.

Norton Simon Museum, The Blue Four Galka Scheyer Collection



**El Lissitzky (Russian, 1890–1941)**

*Globetrotter in Time, 1923*

Color lithograph on wove paper

21-1/8 x 18 in.

Norton Simon Museum, The Blue Four Galka Scheyer Collection



**El Lissitzky (Russian, 1890–1941)**

*Proun, 1923*

Lithograph with pasted paper on wove paper

23-7/8 x 17-3/8 in.

Norton Simon Museum, The Blue Four Galka Scheyer Collection



**Franz Marc (German, 1880–1916)**

*Birth of Wolves*, 1913

Woodcut on Japanese laid tissue paper

comp: 10 x 7-1/2 in.; sheet: 16-1/2 x 11-7/8 in.

Norton Simon Museum, The Blue Four Galka Scheyer Collection



**Franz Marc (German, 1880–1916)**

*Wild Ponies*, 1912

Woodcut on Japanese laid tissue paper

comp: 2-1/2 x 3-1/4 in.; sheet: 4-3/4 x 5-1/8 in.

Norton Simon Museum, The Blue Four Galka Scheyer Collection



**László Moholy-Nagy (American, 1895–1946)**

*Untitled (Ohne Titel)*, 1922–23

Gouache, watercolor, pencil, charcoal and pasted paper on black wove paper

25-3/4 x 19-1/2 in.

Norton Simon Museum, The Blue Four Galka Scheyer Collection



**László Moholy-Nagy (American, 1895–1946)**

*Construction*, 1923

Color lithograph on wove paper

23-7/8 x 17-3/8 in.

Norton Simon Museum, The Blue Four Galka Scheyer Collection



**Emil Nolde (German, 1867–1956)**

*Head in Profile*, 1919

Watercolor and India ink on tan wove paper

14-1/2 x 11-1/8 in.

Norton Simon Museum, The Blue Four Galka Scheyer Collection





**Emil Nolde (German, 1867–1956)**

*Head of a Prophet*, 1912

Watercolor on Japanese wove tissue paper, mounted on thin cardboard

comp: 16-1/8 x 11-3/4 in.; sheet: 18-3/8 x 13-7/8 in.

Norton Simon Museum, The Blue Four Galka Scheyer Collection



**Emil Nolde (German, 1867–1956)**

*Man and Woman*, 1912

Woodcut on Japanese wove paper

comp: 9-1/8 x 11-7/8 in.; sheet: 12-3/4 x 16-3/4 in.

Norton Simon Museum, The Blue Four Galka Scheyer Collection



**Pablo Picasso (Spanish, 1881–1973)**

*Woman with a Guitar*, 1913

Oil on canvas

39-5/8 x 32-1/8 in.

Norton Simon Museum, The Blue Four Galka Scheyer Collection



**Pablo Picasso (Spanish, 1881–1973)**

*Head of a Woman*, c. 1927

Oil on canvas

21-5/8 x 13-1/8 in.

Norton Simon Museum, The Blue Four Galka Scheyer Collection



**Angelo Ravagli (Italian, 1891–1975)**

*Galka Scheyer*, 1936

Oil on canvasboard

13-7/8 x 18 in.

Norton Simon Museum, The Blue Four Galka Scheyer Collection



**Hans Reichel (German, 1892–1958)**

*Falling Star*, 1921

Oil on cardboard

11-1/4 x 13-1/4 in.

Norton Simon Museum, The Blue Four Galka Scheyer Collection



**Hans Reichel (German, 1892–1958)**

*Head of a Man*, 1920

India ink, wash, opaque white and metallic paper on wove paper mounted on metallic paper and mounted on thin cardboard

comp: 6-1/2 x 4-7/8 in.; mount: 11-3/8 x 7-3/4 in.

Norton Simon Museum, The Blue Four Galka Scheyer Collection



**Hans Reichel (German, 1892–1958)**

*Self-Portrait with Cigar*, 1922

Etching on wove paper

comp: 9-3/4 x 7-3/4 in.; sheet: 11-7/8 x 9-1/8 in.

Norton Simon Museum, The Blue Four Galka Scheyer Collection



**Diego Rivera (Mexican, 1886–1957)**

*Blue Boy with the Banana*, 1931

Oil on canvas

36 x 21-5/8 in.

Norton Simon Museum, The Blue Four Galka Scheyer Collection



**R.M. Schindler (American, 1887–1953)**

*Trickling Hands*, 1914–17

Pencil on wove paper

10-1/4 x 4-3/4 in.

Norton Simon Museum, The Blue Four Galka Scheyer Collection



**Oskar Schlemmer (German, 1888–1943)**

*Figure Diagram K1*, 1921

Lithograph on yellow wove paper

19-3/8 x 13-3/8 in.

Norton Simon Museum, The Blue Four Galka Scheyer Collection



**Oskar Schlemmer (German, 1888–1943)**

*Figure H2*, 1921

Lithograph on pink wove paper

19-1/4 x 13-1/2 in.

Norton Simon Museum, The Blue Four Galka Scheyer Collection



**Kurt Schwitters (German, 1887–1948)**

*Mz 289. Erfurt*, 1921

Collage with pasted paper, cloth, watercolor and pencil on heavy wove

6-1/2 x 5-3/8 in.; sheet: 8-1/2 x 6-5/8 in.

Norton Simon Museum, The Blue Four Galka Scheyer Collection



**Kurt Schwitters (German, 1887–1948)**

*Mz 457*, 1921

Collage with pasted paper and cloth on textured wove paper

comp: 7-1/8 x 5-3/4 in.; sheet: 8-3/4 x 7-1/4 in.

Norton Simon Museum, The Blue Four Galka Scheyer Collection



**Kurt Schwitters (German, 1887–1948)**

*Lithograph No. 5 from "Merz Portfolio 3"*, 1923

Lithograph on wove paper

21-7/8 x 17-1/2 in.

Norton Simon Museum, The Blue Four Galka Scheyer Collection



**Kurt Schwitters (German, 1887–1948)**

*Mz 296. Soup*, 1921

Collage with pasted paper and cloth on cardboard

comp: 5 x 3-3/4 in.; mount: 6-5/8 x 5-1/4 in.

Norton Simon Museum, The Blue Four Galka Scheyer Collection



**Students of Galka E. Scheyer**

*Lions (by Jean Ross, Age 15)*, 20th century

Watercolor on paper

11-3/4 x 17-3/4 in.

Norton Simon Museum, Gift of Mrs. Oskar Fischinger



**Wolo Trutzschler (American, 1902–1989)**

*Caricature of Galka Scheyer*, 1935

Crayon on wove paper

19 x 12 in.

Norton Simon Museum, The Blue Four Galka Scheyer Collection



**Lucretia Van Horn (American 1882–1970)**

*Portrait of Galka Scheyer*, 1927–30

Black crayon on wove paper

12-1/2 x 9-1/2 in.

Norton Simon Museum, The Blue Four Galka Scheyer Collection



**Brett Weston (American, 1911–1993)**

*Untitled (Lily)*, 1926

Gelatin silver print

3-3/4 x 3 in.

Norton Simon Museum, The Blue Four Galka Scheyer Collection



**Edward Weston (American, 1886–1958)**

*Dunes, Oceano, 1936*

Gelatin silver print mounted on cardboard

7-5/8 x 9-5/8 in.

Norton Simon Museum, The Blue Four Galka Scheyer Collection



**Edward Weston (American, 1886–1958)**

*Two Shells, 1927*

Gelatin silver print

9-5/16 x 6-1/2 in.

Norton Simon Museum, The Blue Four Galka Scheyer Collection



**Edward Weston (American, 1886–1958)**

*Kelp, 1930*

Gelatin silver print, ed. 7/50

7-1/2 x 9-5/8 in.

Norton Simon Museum, The Blue Four Galka Scheyer Collection



**Edward Weston (American, 1886–1958)**

*Shell, 1927*

Gelatin silver print

9-5/8 x 7-1/2 in.

Norton Simon Museum, The Blue Four Galka Scheyer Collection



**Edward Weston (American, 1886–1958)**

*Pepper, 1930*

Gelatin silver print, ed. 6/50

7-1/2 x 9-1/2 in.

Norton Simon Museum, The Blue Four Galka Scheyer Collection